

PaintShop Pro Tutorials

by Maureen Eves-Lavis

TITLE : COLOUR PALETTES

Software: Corel PaintShop Pro X7

Home Page: [Creative-Designs](#)

Materials Required: None



Tutorial For Previous Versions [Here:](#)

DESCRIPTION:

Create and save custom colour Palettes from Photographs and other images.

REMEMBER TO SAVE YOUR WORK OFTEN

There are two Corel PaintShop Pro Scripts 'Capture Palette' and 'Palette from Image' accessed from the Script Toolbar. To make the Script Toolbar visible, go to View, Toolbars and tick Script.



CapturePalette

PaletteFromImage

CAPTURE PALETTE

1. Open a 300x300 white, raster image.
2. Select the paintbrush and paint several colours on to it as shown here.

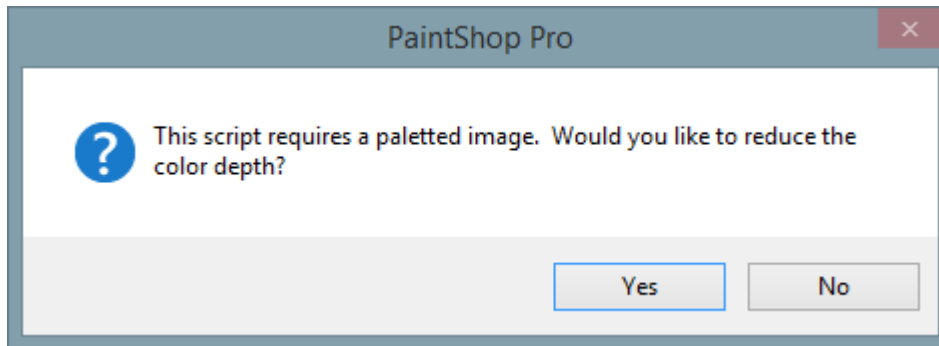
If you wish to use this image, right click, copy and paste as a new image in your workspace.



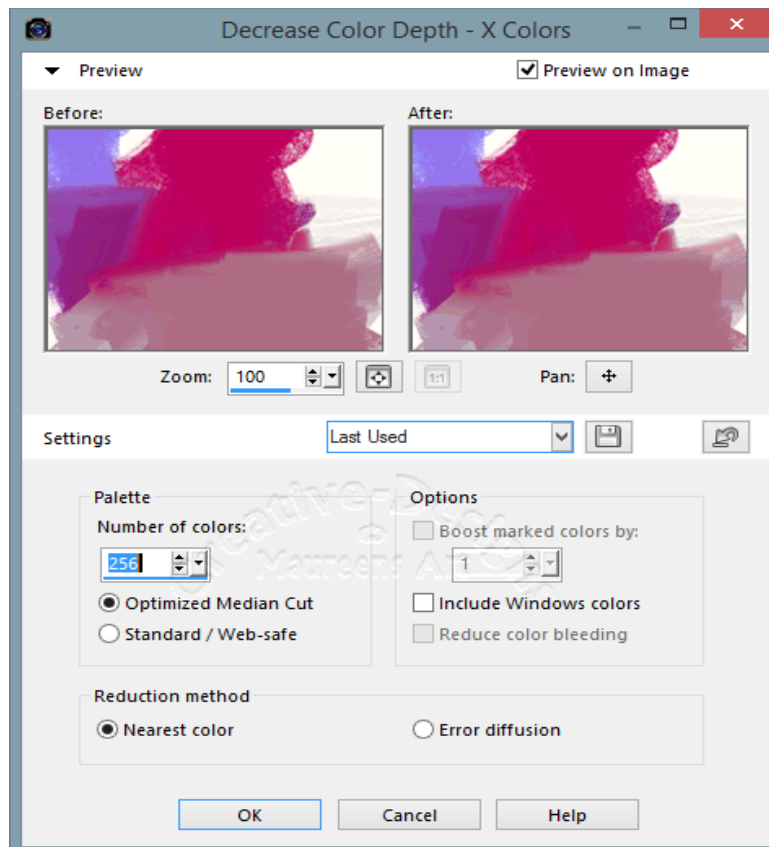
3. From the Script Palette select All, 'Capture Palette'. Run the script by clicking the blue arrow.



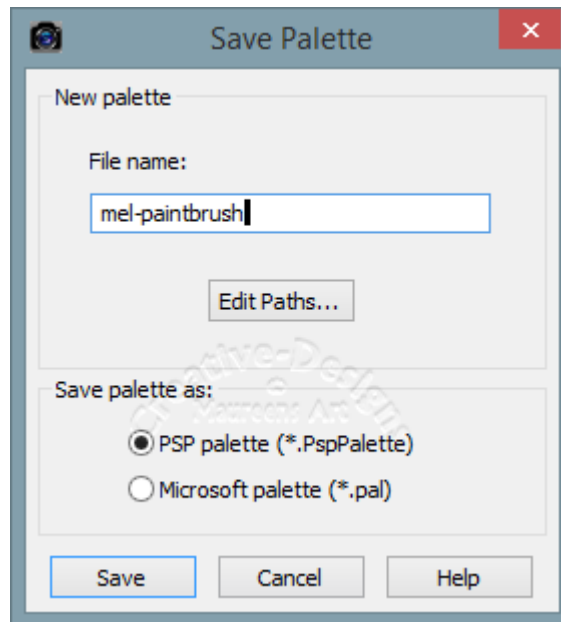
4. A pop up requests would you like to reduce colour depth, select Yes.



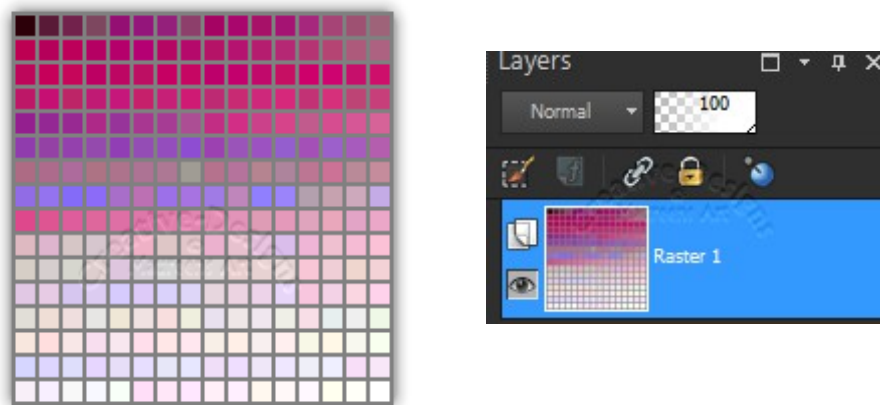
5. A Decrease Colour Depth – X Colours window opens. For a more in depth study of information on this window, go to Help / Help Topics / Select Search and enter Palettes. For this tutorial, we will accept the default settings.



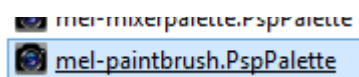
6. Save the Palette with a name. Save palette as: PspPalette is PaintShop Pro's default and cannot be used in any other programme. *.pal is Microsoft's palette and can be used in other programmes. Once you have decided, click Save.



7. The colours are immediately added to an image in your workspace.



8. The file can be viewed in the Palettes folder.



9. Close all images in the workspace. If prompted to save, select no.

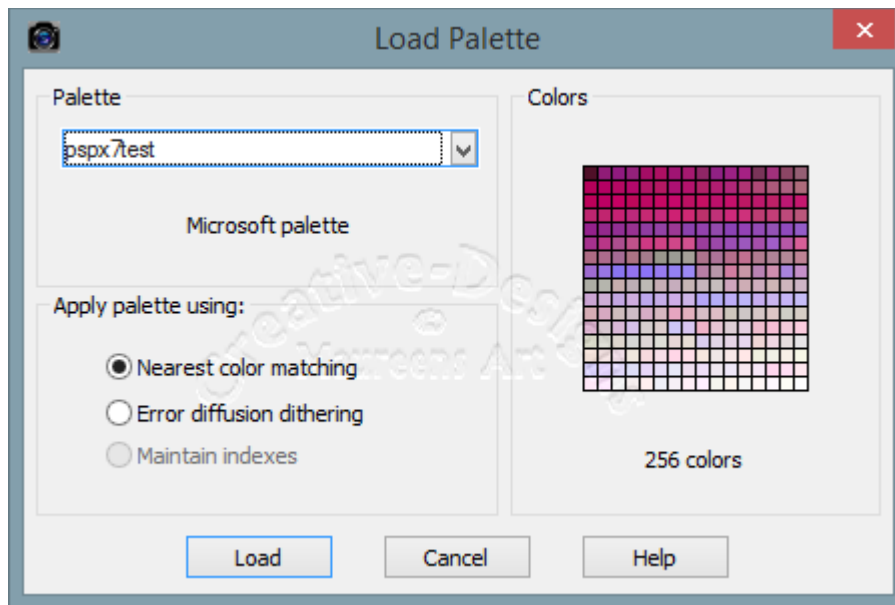
LOADING A PALETTE

1. Open a new white image 300x300 pixels.

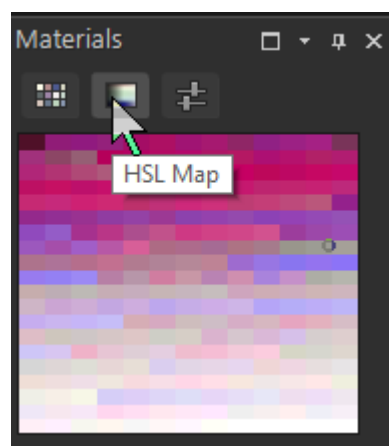
2. Go to Image, Palette, Load Palette.

As previously mentioned, go to Help Topics to read further information on this window.

Click Load.



3. The colours from the palette are showing in the HSL MAP ready for you to use.



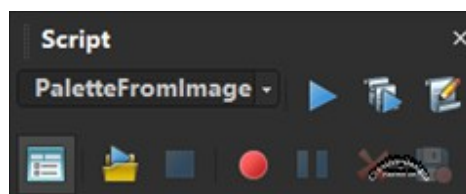
A COLOUR PALETTE FROM A PHOTOGRAPH

What about creating a colour palette from photographs.

1. Open a photograph of your choice, something you would like to have colours from to perhaps use for painting or other uses. You can right click, copy and paste the below image into your workspace if you wish.

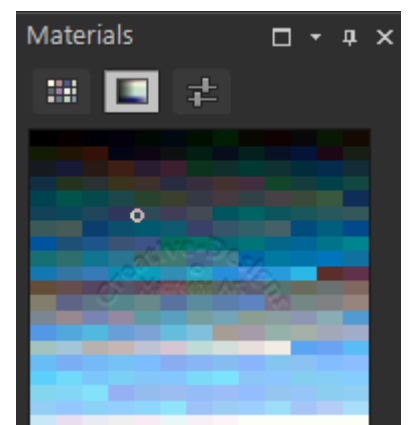


2. On the Script Toolbar find 'Palette from Image'. Click the blue arrow to run the script.




3. A 'Decrease Colour Depth – X Colours' window will open. Don't change anything. Click OK.

4. A 'Save Palette' window opens. Edit paths should be okay as you checked that previously. Look at the HSL Map to see the colours already available.

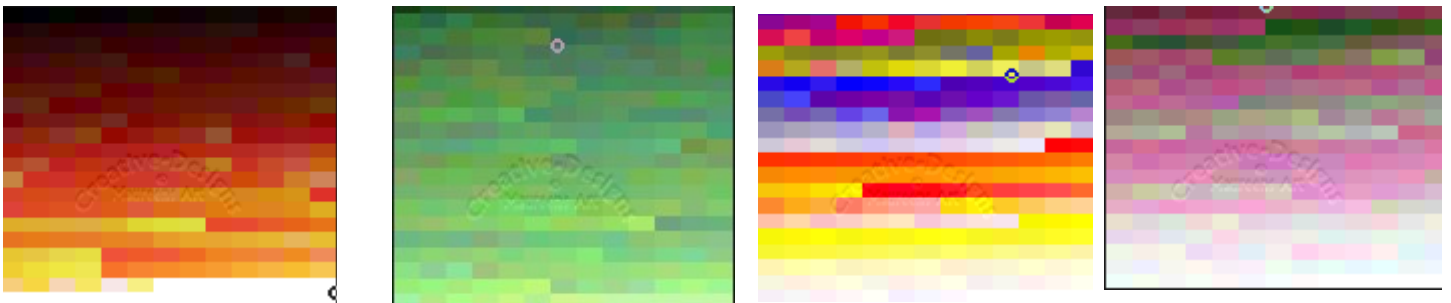
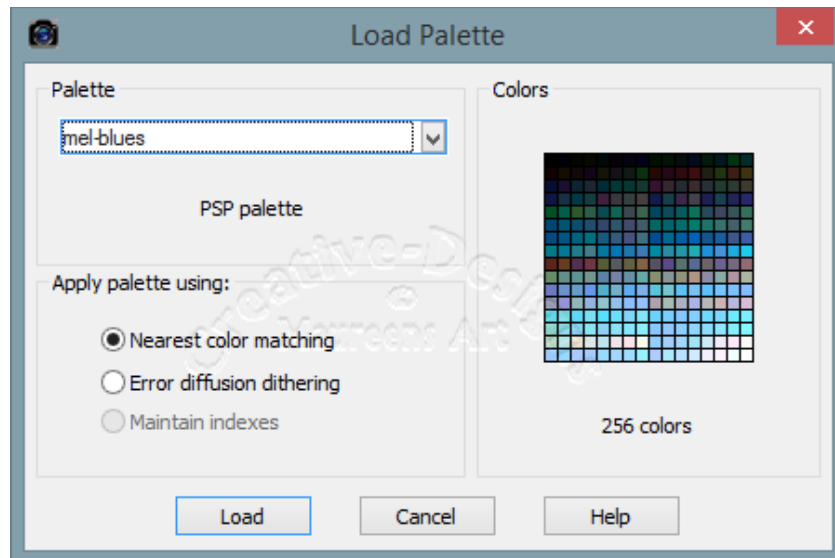


The colours from this palette are now saved.

 mel-blues.PspPalette

Load the new palette with the same instructions given above.

Colour Palettes can be created from any style of image.



A selection of palettes created from various images



PAINTSHOP PRO TUTORIALS FOR FREE!