

# PaintShop Pro Tutorials

by Maureen Eves-Lavis

## TITLE: ESCHER STYLE IMAGE

**Software:** PaintShop Pro X7

**Web Page:** [Creative-Designs](#)

**Materials Required:** [Supplies.zip](#)

Previous versions may be used

### DESCRIPTION

M C Escher a Dutch artist created a Lithograph image 'Bond of Union'. The image is of two heads that are slatted, entwining spirals. It is to say, and unusual concept. You can view the page [HERE](#). This tutorial will teach you how to place an image inside a slatted, shape. The final image can be embellished to whatever your creative desire allows you.



### REMEMBER TO SAVE OFTEN

Unzip the files and place the shape into your Preset Shape folder. The sky and reflection images add to your Patterns folder. The two photographs open in PSP workspace. You may want to work in tabbed or cascade vertically documents as you are working with multiple images.

### STEP 1 - MAKING THE SHAPE

Highlight photograph1. Duplicate then close the original. Name the layer original image. The photograph's size is 2000x2496, don't resize down.

Select the Preset Shape Tool and find the new shape. Before drawing, apply these settings on the Tools Options Palette:

Retain Style: Unticked

Anti-alias: Ticked

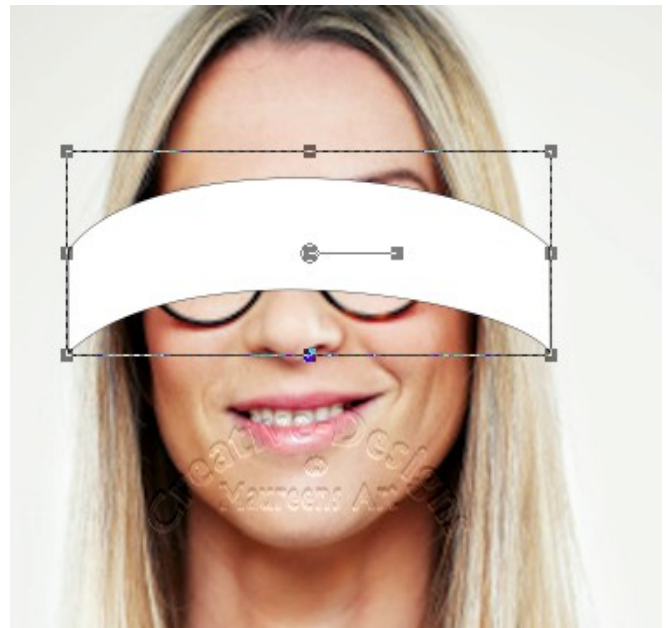
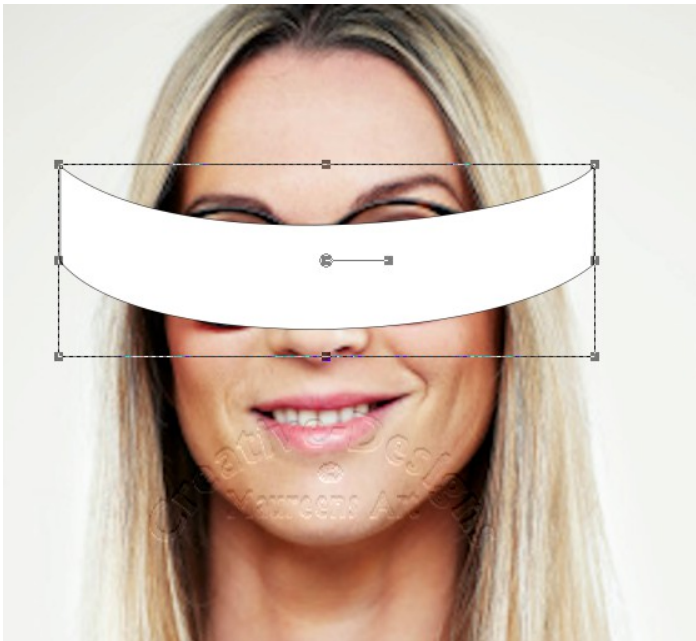
Create as vector: Ticked

Line style: Solid

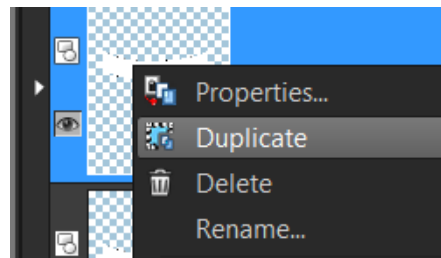
Width: 2

Go to the Materials palette, foreground black, background white.

Draw a shape over the eyes. Go to Image, Flip, Flip Vertical.



Change to the Pick Tool, go to the Layer palette, right click and duplicate five times.



Open the arrow at the side of the vector layer to reveal the sub-layers. Hold the Ctrl key and select all the vector layers.

Go to Objects, Distribute, Space Evenly vertical. All images are now spaced evenly down the image.

With all layers still selected, there will be a bounding box around the shapes. Grab the top node and pull down until the shapes are a little narrower and adjust them over the head neatly.



Right click on the selected layers and Convert to Raster layer.

All these layers require renaming. Start at the top and name this *layer 6*, go down the stack and number the layers in sequence until all layers are renamed.

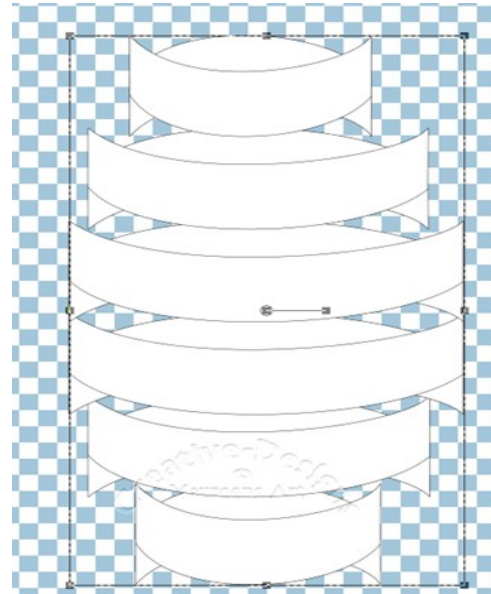
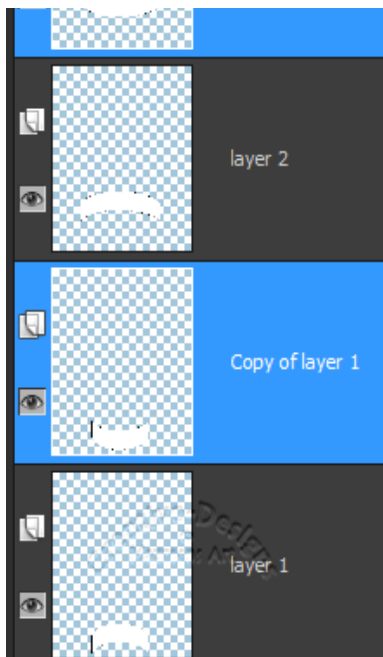
Select layer 6 and pull in both sides. Do the same to layer 1.

Push in slightly layer 2 and 5 until your shape looks like mine.

The original image can now be deleted as it's no longer required.



With all layers 1 to 6 highlighted in the layers palette, right click on any layer, Duplicate. All duplicated layers will be highlighted while the original layers will not. Keep selected, go to Image, Flip, Flip Vertically.



Keeping the Copy layers selected, place the cursor on the centre node and move shapes as one image into place. Zoom in if necessary. To nudge them in, use the up/down keys on the keyboard. If you lose the selected layers, hold the Ctrl key while selected the Copy layers again.

You may want to save this image as a PspImage should you wish to use it again for another project.

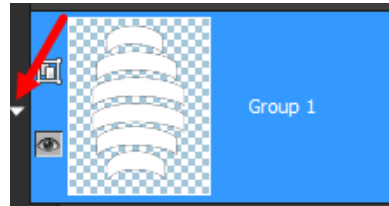
## STEP 2 – ADD BACKGROUND PATTERN

With the copy layers still selected, go to the New Layer Group button at the bottom of the Layers Palette.

A dialogue window will open. Leave the name as Group 1.

Click Ok.

Click on the arrow to hide the layers within the group.

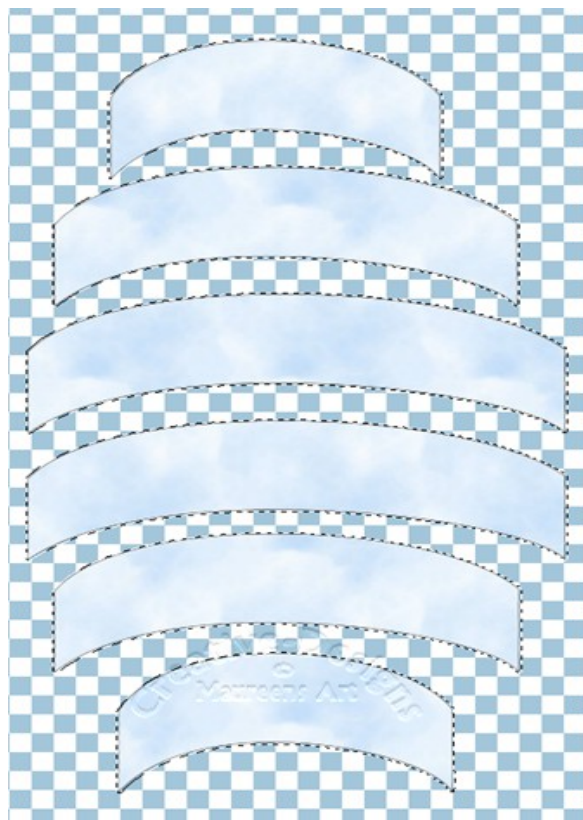


With Group 1 highlighted, go to the Tools bar and choose the Magic Wand. Tap on each shape on the canvas.

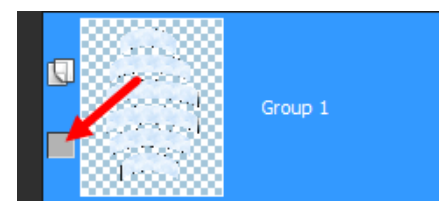
Go to the Materials Palette, foreground and find the sky pattern.

Select Flood Fill, lower the Opacity on the Tools Options palette to 56. Fill the shapes by tapping down on one shape. All shapes will be filled.

Ctrl+D to deselect.



Click the Visibility Toggle to Group 1 to hide the filled shape layers.



## STEP 4 - ADD THE IMAGE

Our attention now turns to adding the photograph to the next set of shapes.

If layers 1 through to 6 are not visible make them visible now.

Hold the Ctrl key while you select all layers - 1 through to 6. Keep the layers highlighted while you apply the following steps

Select the Magic Wand. On the Tools Options palette, check that Mode is Add(Shift), Tolerance 10, Contiguous ticked, Feather 2, Anti-alias ticked and Outside selected. Tap in each shape to make selections.

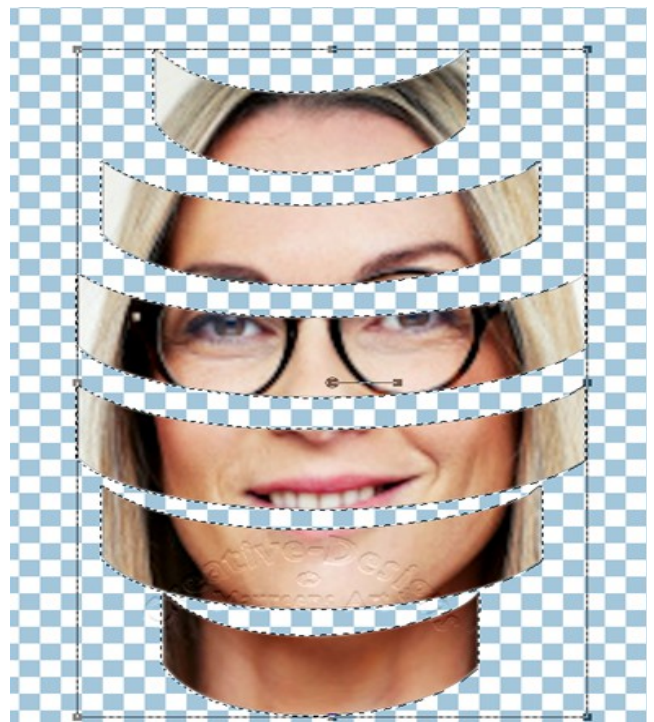
Change to the Pick Tool, go to the photograph, Edit, Copy.

Back to the canvas, go to Edit, Paste Into Selection. The image is now within the slats.  
Ctrl+D to deselect.

You will notice in the Layers palette, the image appears to only be in Copy of layer 6 and all other layers with the shape are blank. Making sure Group 1 is hidden, right click on the Copy of layer 6 and Merge, Merge visible.

Click on the Visibility toggle on Group 1 to show the filled background slats.

Right click on any layer, Merge, Merge Visible.  
If there is a marquee visible, Ctrl+D to deselect.



Resize the canvas by going to Image, Resize. Enter 600x800 pixels.

## STEP 5 - EMBELLISHING

Let's do a little finishing off to the image to make it look more presentable.

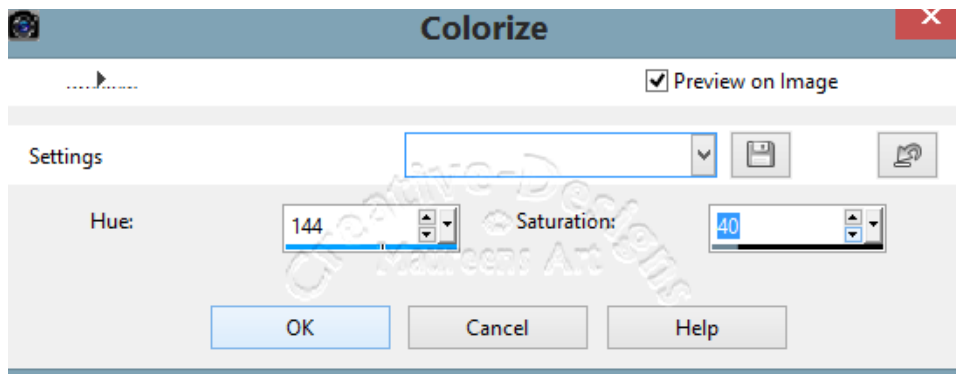
Add a new Raster layer, move it down below the image.

Add the Visibility Toggle to hide the slatted image.

Select the reflection pattern for the foreground, Materials Palette.

Increase the Opacity to 100 on the Tools Options Palette. Flood Fill the transparent canvas.

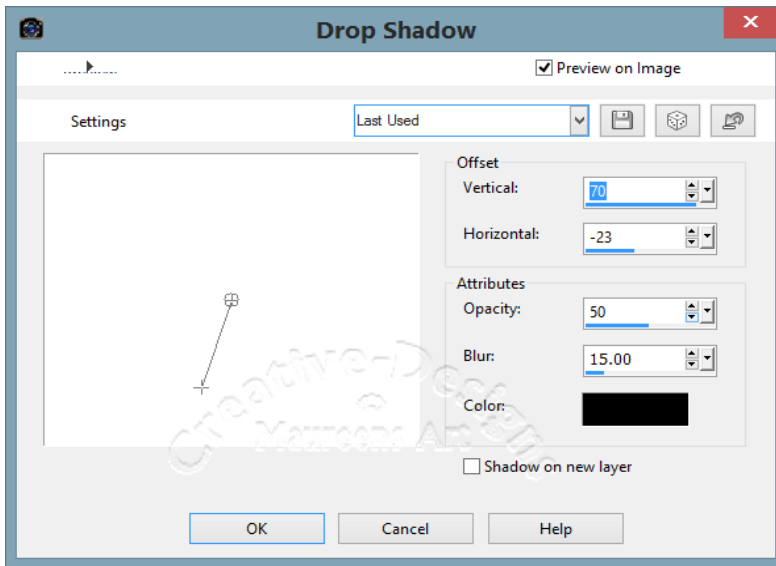
Go to Adjust, Hue, Saturation, Colourise. You can choose your own Hue and Saturation. I used the settings below, which is a blueish grey.



Unhide the slatted image. Tilt the image to an angle.



## Add a Drop Shadow



Right click on any layer, Merge, Merge Visible.

Go to Effects, Artist Effects, Balls and Bubbles.



**IMPORTANT: AS YOU ARE ADDING SETTINGS IN BALLS & BUBBLES YOU MUST NOT CLICK OK UNTIL THE WHOLE PROCEDURE IS FINISHED. IF YOU DO CLICK OK, YOU WILL HAVE TO START OVER.**

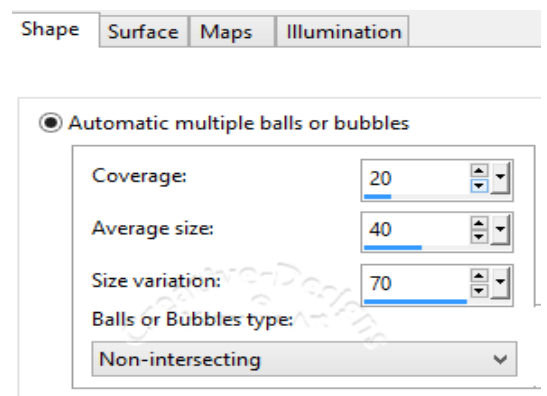
Click the Shape Tab. Select Automatic multiple balls or bubbles.

Coverage: 20

Average size: 40

Size variation: 70

Balls or Bubbles type: Non-intersecting.

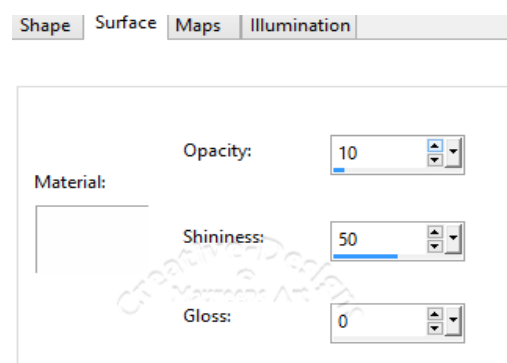


Next tab, Surface. If Material is white leave it, if not, change to white.

Opacity: 25

Shininess: 26

Gloss: 100

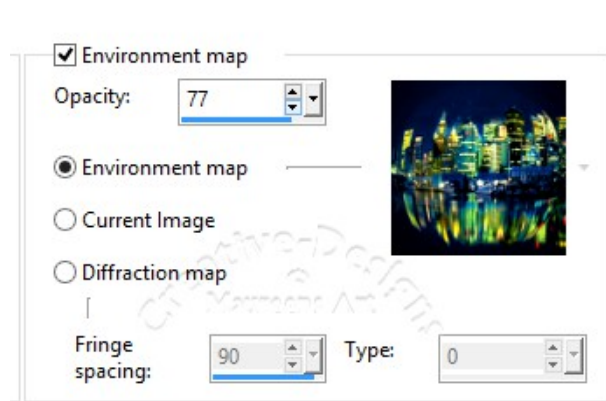




The next tab is Maps. Click on the drop box to select a map. Choose something from the list of files. Make sure Preview on Image is ticked so you can see effects in 'real time'. Select something you like from the drop box.

Adjust the Opacity according to your taste.

We will not be using the Illumination tab so, if you are happy with your selection, click OK.



Add a little Vibrancy to your image from Adjust, Hue & Saturation, Vibrancy.

If you wish and you have, add a few stars with the Paint Brush.



Experiment with images, textures, colour, brushes and many more things that PaintShop Pro offers to create lovely images. Now it's your turn to do your very own creation. This concludes the Escher Style Image. I hope you have enjoyed this tutorial.

Tutorial based on Mark Escher style imagery and a tutorial written by Debbie Hardisty [Bubble Slatted Head](#) for PhotoImpact

Two further Escher style images that I created.



**PAINTSHOP PRO TUTORIALS FOR FREE!**