

PaintShop Pro Tutorials

by Maureen Eves-Lavis

TITLE: CUSTOM SWATCHES PALETTES

Software: PaintShop Pro X7

Web Page: Creative-Designs

Materials Required: Swatch.zip



DESCRIPTION

In this small tutorial you will learn how to create your own custom palettes to add colour, gradient, pattern or texture swatches.

REMEMBER TO SAVE YOUR WORK OFTEN

The new features in PaintShop Pro X7 for the Materials Palette are very good. It takes a little getting used to, but once you get the hang of it, you'll never want to go back to the old Materials Palette.

Go to File, New and open a New Image of about 300x300 pixels with a white background. It will show as a 'background' in the layers palette, leave it as a background.

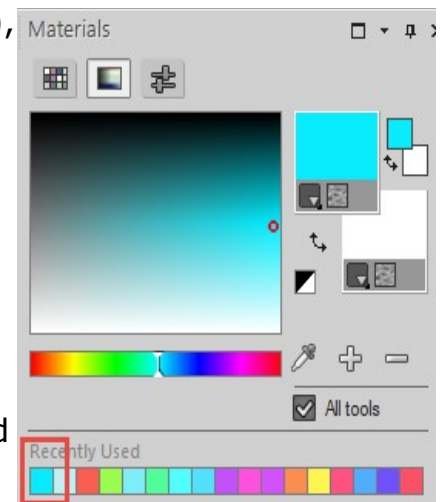
Looking at the palette you will see changes immediately.

From the top left is the Swatches palette (more about this later), next the HSL Map which is shown in the image on the right.

Below it is a slider that allows you to scroll through the colours until you find the right one. Find a nice aqua blue.

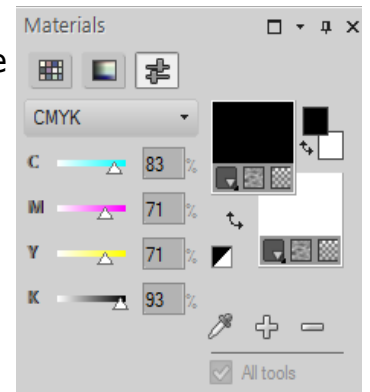
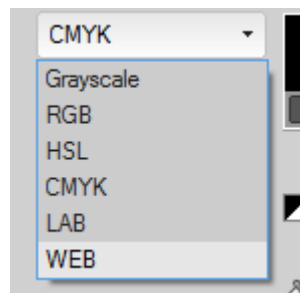
Select the Paintbrush and paint a few strokes on the canvas.

The swatch has been added to the Recently Used swatch list and shown on the left of the Recently Used.



Hover over any of these swatches. the tool immediately changes to the Dropper tool to allow you to select any colour you have previously used. This is good if you wish to gather together a selection of swatches for a particular image to have on hand.

Finally Colour Sliders. There is a good selection of Colour Profiles. Click through each one to view the differences in the colours on the sliders.



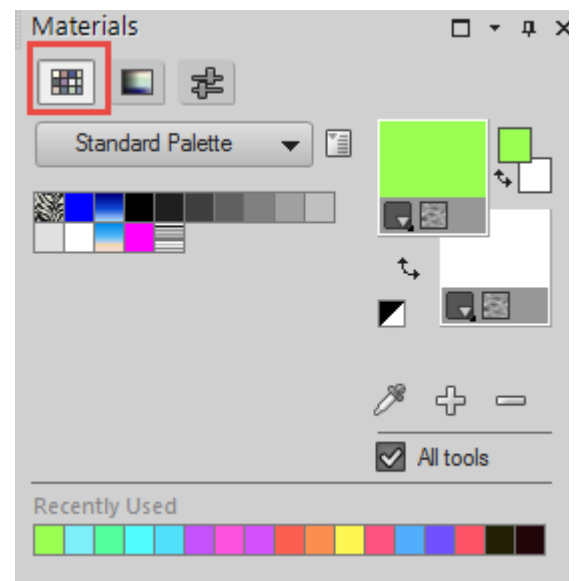
On the Palette is a Dropper Tool, Plus and Minus buttons! The dropper tool speaks for itself and we all know how to use that. But what about these two new buttons.

Select the Swatches. You now have a drop list 'Standard Palette'.

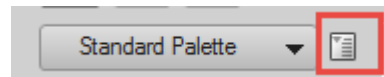


If you are unable to right click and save the Skin Tones image on the left, there is a zip file that contains the image available from the top of the tutorial, for you to download and open in your workspace.

With the dropper tool, select the first swatch. The colour is now selected.

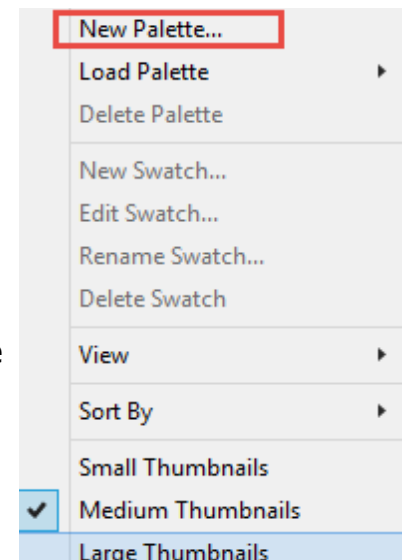


Along side the Standard Palette is an icon button More Options.



At the top is New Palette. Click on it.

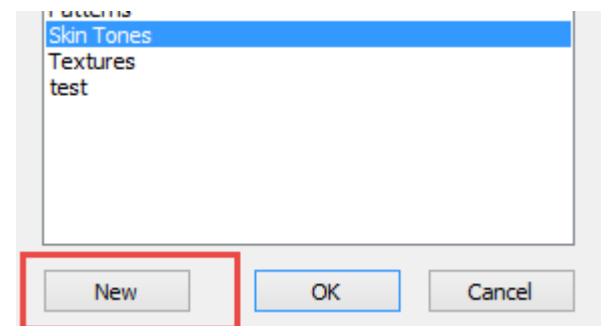
A Palette Name window opens that allows you to give the palette a custom name. Name the palette Skin Tones and click Ok.



Open the Standard Palette drop list and select Skin Tones.

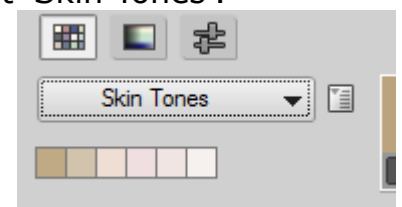
Click the + button which opens the Add Swatch to Palette. Select Skin Tones and click OK.

(You will notice there is a New button on this palette, this enables you to make a new palette and add the swatch directly).

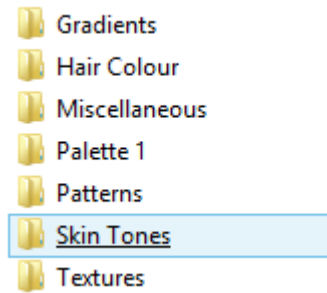


The swatch should now be viewable under the new palette drop list 'Skin Tones'.

Go through each colour adding to the list as shown on the right.

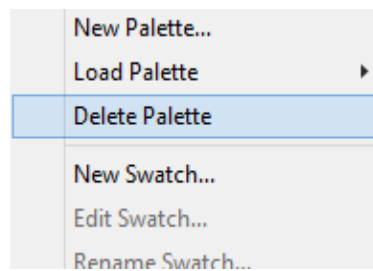


You can create custom palettes for Gradients, Patterns and Textures. All files are saved in Documents / Corel PaintShop Pro / 17 / Swatches. Each Palette has its own folder and contains the swatches you have added.

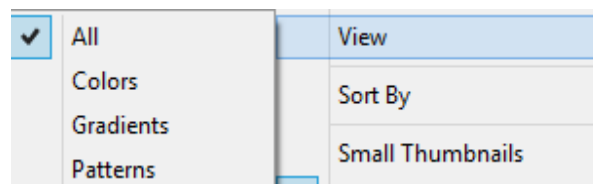


If you wish to delete a palette, go to More Options, Delete Palette.

Will it delete the palette from your files, yes it will, so be careful what you are deleting.



If for some reason you can't view swatches after selecting a palette from the drop list, go to View, All.



You can now have your very own custom colour palettes for particular projects with all the gradients, colours, textures and patterns that you need for the image in one file for quick and easy access.



PAINTSHOP PRO TUTORIALS FOR FREE!