

PaintShop Pro Tutorials

By Maureen Eves-Lavis

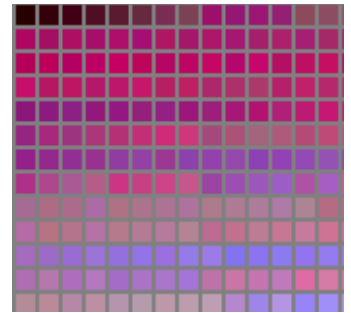
TITLE : CUSTOM COLOUR PALETTES & SWATCHES

Software : Corel PaintShop Pro X6

Home Page : Creative-Designs

Materials Required: None

previous Versions Can Be Used



DESCRIPTION:

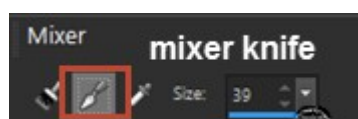
Create and save your custom colour swatches from the mixer palette. With a script capture and save a colour. Capture and save a colour palette from a photograph using a script.

REMEMBER TO SAVE YOUR WORK OFTEN

The two scripts 'Capture Palette' and 'Palette from Image' are two of Corel PaintShop Pro scripts. They are not in your PaintShop Pro/ your version? / Scripts-Trusted folder, but Corel_ Scripts-Trusted folder on the main C: drive where PaintShop Pro is installed. Palettes and swatches you create from these scripts will be saved in your PaintShop Pro / your version? / folders – Swatches in the Swatches folder and Palettes in Palettes folder.

CREATE A CUSTOM COLOUR SWATCH

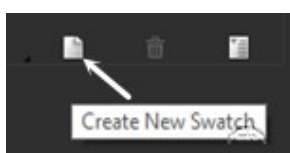
1. You begin by selecting colours to mix on the mixer palette. Mix two or more colours to give new colours. As you can see on the right, purple, white and cerise pink were chosen from the frame colour palette in materials. Apply a little mixing and blending with the mixer knife.



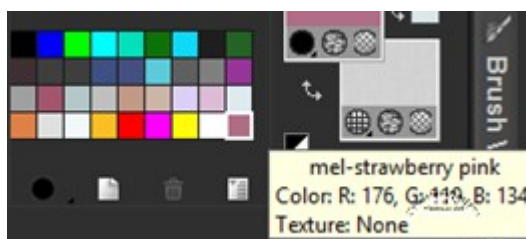
2. The lower strawberry pink colour is what I'll save. You choose your colour with the dropper tool. The foreground colour is now displaying this colour.



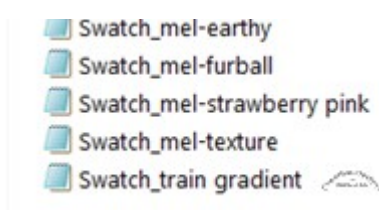
3. To save the swatch, first make sure the swatch palette is activated in Materials. Click on the Create New Swatch. Give your new swatch a name. Click OK.



4. The new swatch is now showing in the swatches palette. Hove the cursor over the swatch to see all information pertaining to the new swatch.



5. Go to Corel PaintShop Pro / your version / Swatches. Open the folder to see your newly saved swatch. The script is informational only and contains all data pertaining to the new swatch. The script cannot be used like other scripts. If you delete a swatch, it will be deleted from this folder too.

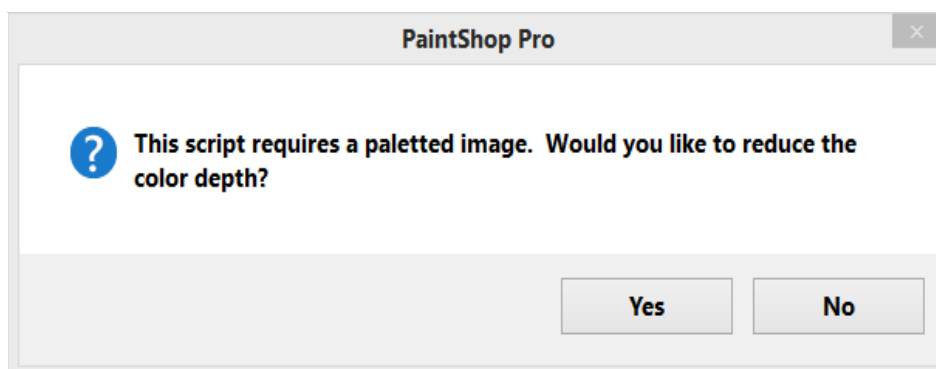


CAPTURE PALETTE

1. Take a screen capture of the Mixer page. Crop it close to the paint. You can close the mixer palette now.
2. If the Script toolbar is not open, go to View, Toolbars and choose Script. In the drop-list, Trusted Scripts, locate 'Capture Palette'. Run the script by clicking the blue arrow.

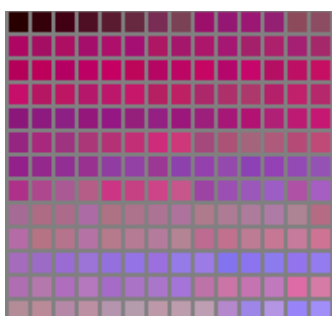


3. A window will open as shown here. Click Yes.

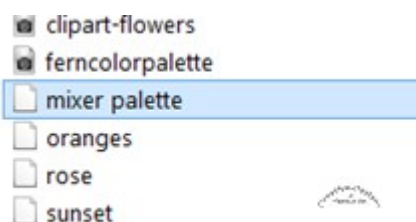


4. A Decrease Colour Depth – X Colours window opens. Keep 256 number of colours. You can select Optimised Median Cut or Standard / Web-safe colours. Don't tick Include Windows colours as it will mix the colours together. Leave Nearest colour marked. Click OK.
5. A Save Palette window opens. Under File Name: give the palette a name of mixer palette.

6. Click on the Edit Paths button which opens File Locations. Check you are using your version Palette folder under Palettes folder and also in the Save to: This is where the palettes will automatically save. Click OK.
7. You have an option to save as a Microsoft palette that enables you to use the palette in other applications. Save as a PSP palette – click Save.
8. View this [video](#) to show you how the capture is created.
9. The colour palette on the right has been created from the colours of the screen capture of the mixer palette. Yours may be a little different depending on your selection of colours you added to the mixer palette.

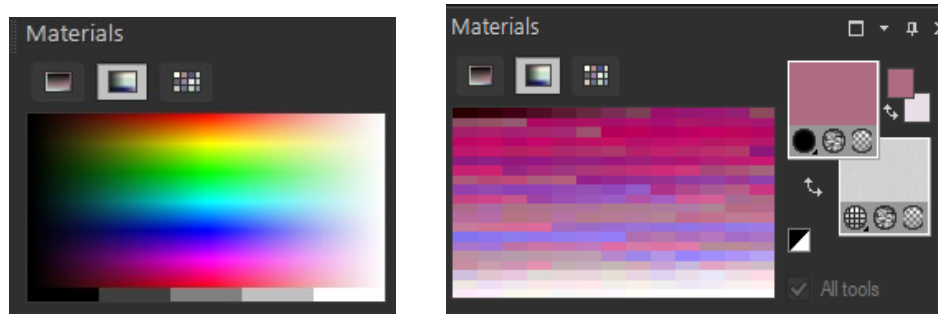


10. Close all images in the workspace. If prompted to save, choose No.
11. Open an image in the workspace. Any size or background will do.
12. Go to Image, Palette, Load Palette. Click Load.



13. If you are not already in the Rainbow colour palette in Materials, please select it now. You will see the new palette has loaded into the rainbow palette.

14. To restore the rainbow palette, close the image in the workspace.

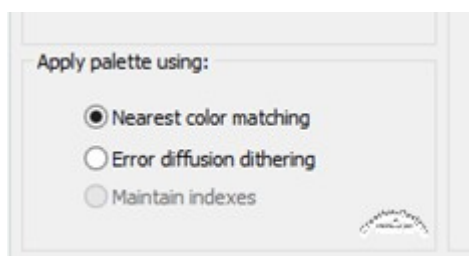


15. On the Load Palette under Apply palette using:

Nearest colour matching – changes each image colour to the colour in the palette that is the closest match.

Error diffusion dithering – attempts to maintain the image appearance by dithering colours that are not in the palette. Dithering places pixels of different colours next to each other to simulate missing colours.

Maintain indexes – assigns each colour in the palette a sequential index number and does the same for each colour in the image. Each colour in the image is then changed to the like-numbered colour in the palette.



16. Palettes can be edited by choosing Image, Palette, Edit.

17. You can mix your favourite colours and create new ones. Make yourself new palettes to paint or use for graphics.

PALETTE COLOUR TRANSPARENCY

1. Paletted images (those with 256 or fewer colours) do not support transparent backgrounds, but you often need a way to make part of your image transparent when

you are using an image on a Web page. For example, you may have a round logo and you want the background of the Web page to display around the logo.

2. Most Web browsers can choose not to display one colour, effectively making it transparent. In PaintShop Pro, you have two ways to make a colour transparent: You can make one colour in an image palette transparent. The colour can be the background colour or any colour from the image. To set a transparent colour, the image must have only one layer and use an image palette, which means the image must have a colour depth less than 16 million colours (24-bit).

3. You can edit a 16 million-colour image and save it as a PspImage file format, then use the GIF or PNG optimiser to export a copy of the image. With these optimisers you can set the transparency of the image. This is recommended because it does not change the colour depth or flatten the layers of your original PspImage file. For more information saving optimised images

Information courtesy Corel PaintShop Pro

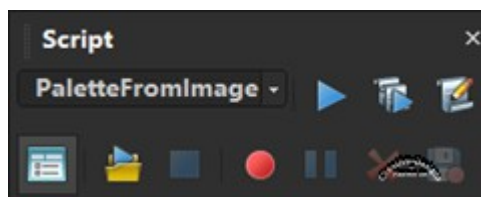
A COLOUR PALETTE FROM A PHOTOGRAPH

What about creating a colour palette from photographs.

1. Open a photograph of your choice, something you would like to have colours from to perhaps use for painting.



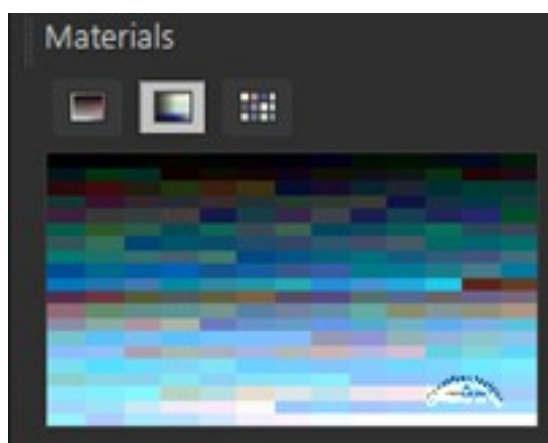
2. On the Script Toolbar find 'Palette from Image'. Click the blue arrow to run the script.



3. A 'Decrease Colour Depth - X Colours' window will open. Don't change anything. Click OK.

4. A 'Save Palette' window opens. Edit paths should be okay as you checked that previously. Before you even save the palette, look at the rainbow colour palette. It's already changed to the colours from the photograph.

Give the file a name. Click Save.



5. In Image, Palette you can choose edit and image palette of 16 to 256 colour images.

Change the sort order of colours by clicking on the drop-list and choose by Palette order (default)

By luminance

By Hue

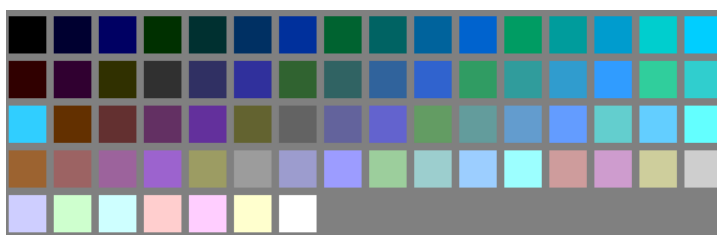
Revert returns the palette to default.

When you click on one of the colours, you will be given the Palette Index number.

The RGB will be shown as well as the HTML colour.

Courtesy Corel PaintShop Pro X6

6. Lastly, create a colour palette of a photograph and save. Open the photograph again. Select the Capture Palette script and run. Give the file a name and save as a PSP palette. If you have a folder where you save colour charts, click File, save as and save your newly made colour chart. Even though the colour palette is accessible from Image, Palette, it only open in PSP Materials / Rainbow palette, it will not open as a palette shown on the right.



I trust you have enjoyed learning how to create and save swatches, Capture a Palette and also a Colour Palette from an image.

To learn more about PaintShop Pro, join the free Beginner's Workshop for PaintShop Pro [HERE](#).

Also, you are welcome to join the PIRC Forums where there is a great community of graphic artists all learning together [HERE](#).