

PaintShop Pro Tutorials

By Maureen Eves-Lavis

TITLE: la mer COLLAGE

Software: PaintShop Pro X6

Home Page: [Creative-Designs](#)

Materials Needed: [Supplies Zip File Here](#)



DESCRIPTION

In this tutorial you will learn Collage. It is a beautiful way of adding images, graphics, embellishments and painting to create a fine piece of art.

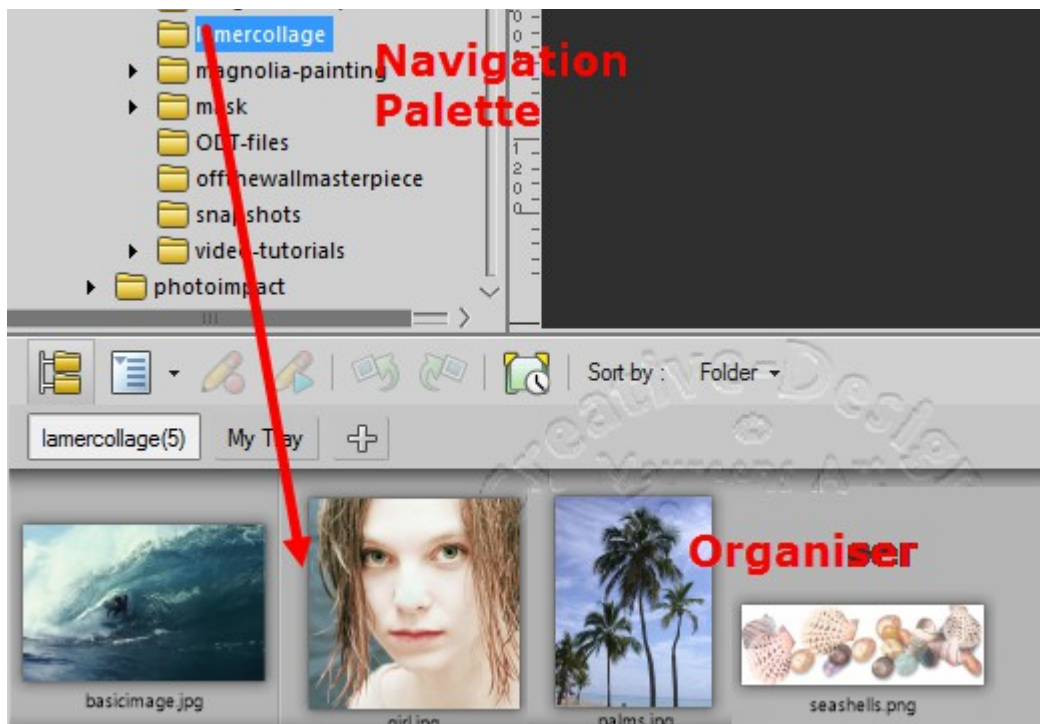
Remember to save your work often to avoid losing it

Create a new folder and name it **Collage**. For this tutorial, I have provided a background image, facial and palm trees image. A png selection of shells, Foto Frame plugin and a waterfall brush. Place both the script and brush into your Brushes folder.

PaintShop Pro X6 has a new feature of taking an image from the Organiser and placing it directly onto another image on the Layers Palette. The image is placed on its own layer, but not it's own canvas in the workspace. It literally sits on top of the image directly. This saves time of copy and pasting. How? Let's find out.

NAVIGATION & ORGANISER PALETTES

Open the Navigation palette and click on Collections / Folders / Browse More Folders. Locate the collage folder that contains all images. When the folder is selected in the Navigation panel, image thumbnails will open in the Organiser palette which sits at the lower edge of PaintShop Pro. If the Organiser is not open, go to View, Palettes, Organiser.



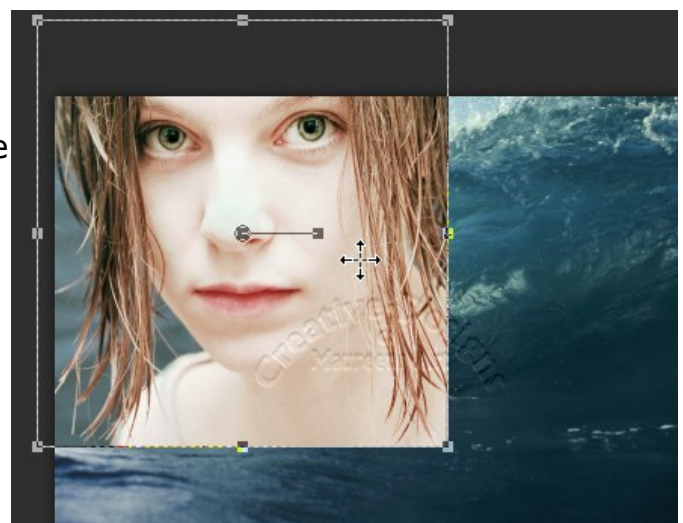
BASE IMAGE

Double click on the base image thumbnail in the Organiser, the image will open in the workspace.

Note: *If you are using a version of PaintShop Pro prior to X6, you cannot drag and image from the Organiser to the Layer. You need to open the image, go to Edit, Copy, Edit then Paste onto the background image. Wherever I state in this tutorial to drag out of the Organiser to the Layer, you need to do copy and paste.*

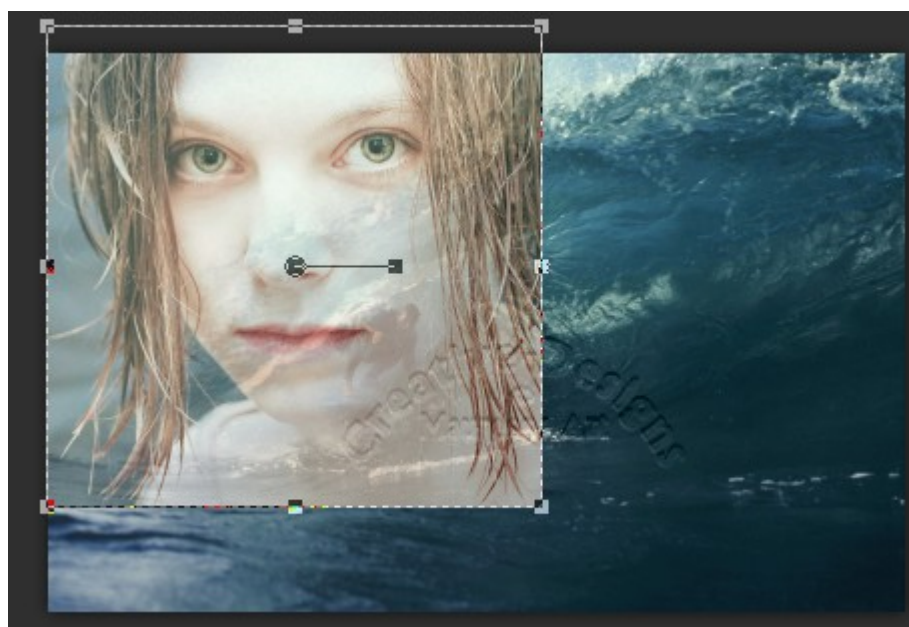
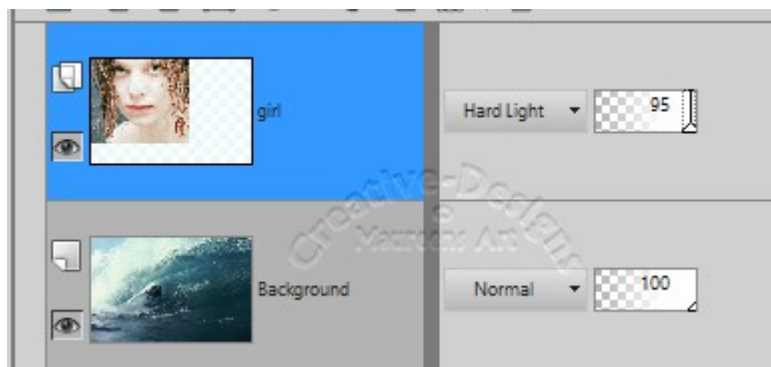
FACE IMAGE

Next select the girl's face image. Click down on the thumbnail, hold and move up onto the base image on the Layers palette. Not onto the canvas. The image will sit over the base image but on it's own layer in the Layers Palette.



With the Pick tool, resize the face image down and move to the upper, left corner as shown on the right.

With the girl layer highlighted add a Blend Mode of Hard Light with an Opacity of 95.



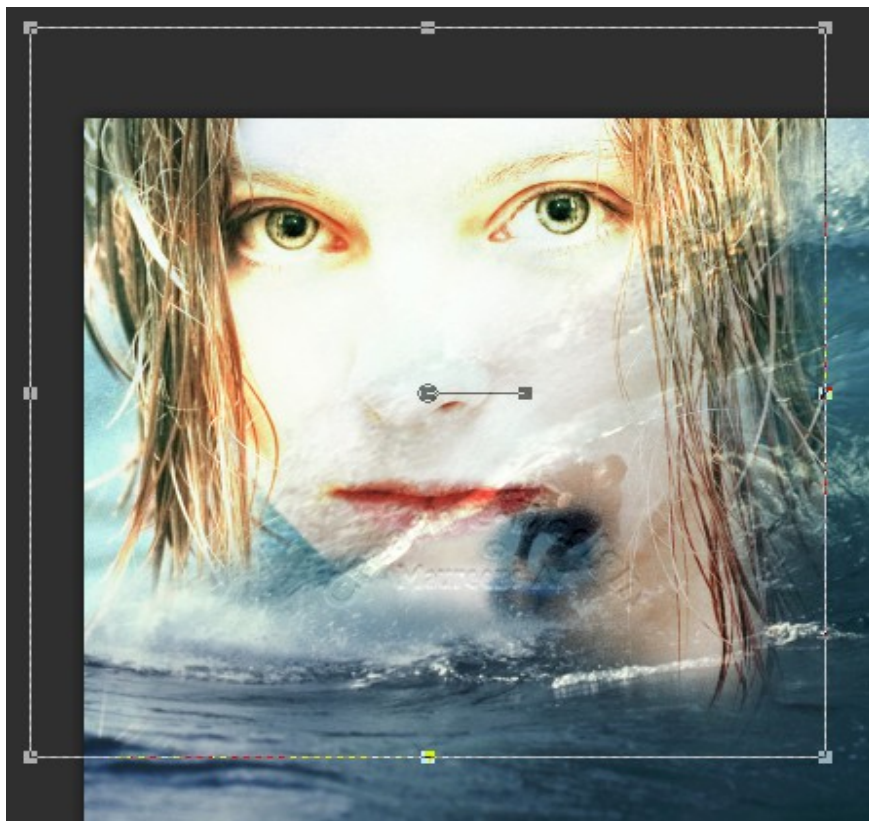
We need to do a little work on the face image.

Select the Eraser tool and apply these settings from the Tools Options palette:

- Size 336
- Hardness 40
- step 10
- Density 19
- Thickness 100
- Rotation 0
- Opacity 16

Erase around the image as shown in the image below. Because the eraser's opacity is set so low, it will not erase away too much. Just make sure you remove the sharp edges of the image.

Reduce the Eraser size down to 125, Opacity up to 68 and very lightly erase over the surfer so he shows through a little more. Your image should look like the one below.



Select the water layer and go to Adjust, Hue, Saturation, Vibrancy. Move the slider to the right to give the water more colour.



CHANGE EYE COLOUR

Add a new Raster layer above the face image.

Select the Airbrush and a nice bright colour. Green, blue or turquoise or match a colour to the sea.

Zoom in to the eyes. Adjust the size of the brush to the pupil and dab down. Do the same with the other eye.

Change the blend mode on this layer to Dodge. Wow, look at those glassy eyes.



PALM TREES, WATERFALL AND SHELLS

From the Organiser palette, click, hold and move onto the base water layer, the palm trees image. Remember not to move the image onto the canvas, only the layer.

Resize using the Pick tool as shown on the right.



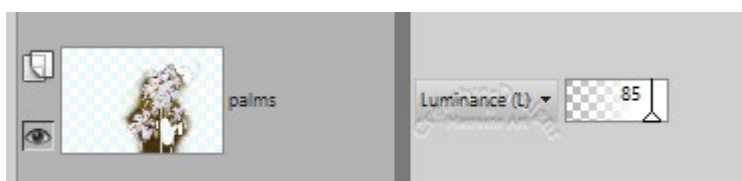


Go to the Menu bar, Image, Negative Image.

With the palm trees image layer selected, add Blend Mode of Luminance(L). The palm image has blended with the background but not the palms which is what we want.



Change to the Eraser tool with the same Tool options as above when erasing around the face. Gently remove any harsh lines away from the image. Reduce Opacity to 85.



I hope you are remembering to save your image as a PspImage.

WATERFALL

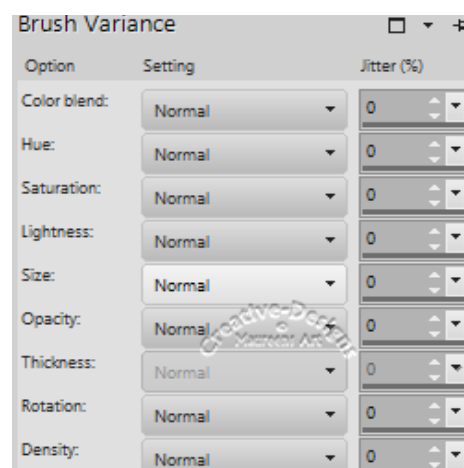
Highlight the base image (water) in the layers palette. Hold the Ctrl key and add a New Raster layer.

Select the Paintbrush, locate the waterfall brush. Set the following size and options on the Tools Options Palette:

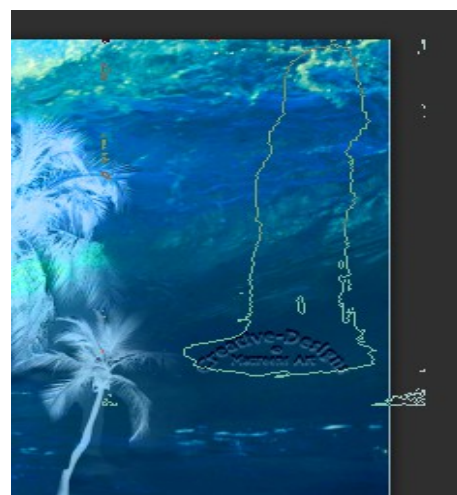


- Size: 999
- Hardness: 100
- Step: 32
- Density: 100
- Thickness: 100
- Rotation: 0
- Opacity: 100
- Blend Mode: Normal
- Continuous: Unticked
- Wet Look Paint: Unticked

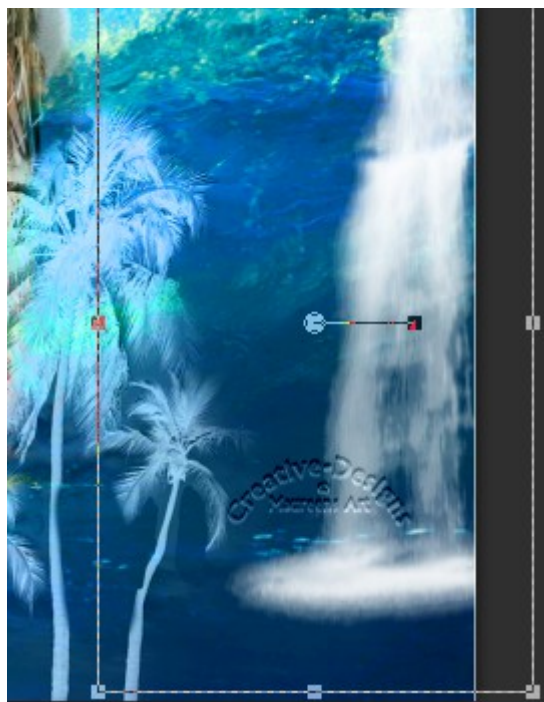
Go to the Brush Variance Palette and alongside Size, change to Normal.



Dab the brush down twice on the upper, right area of the image.



Change to the Pick tool to lengthen and widen the waterfall a little more.



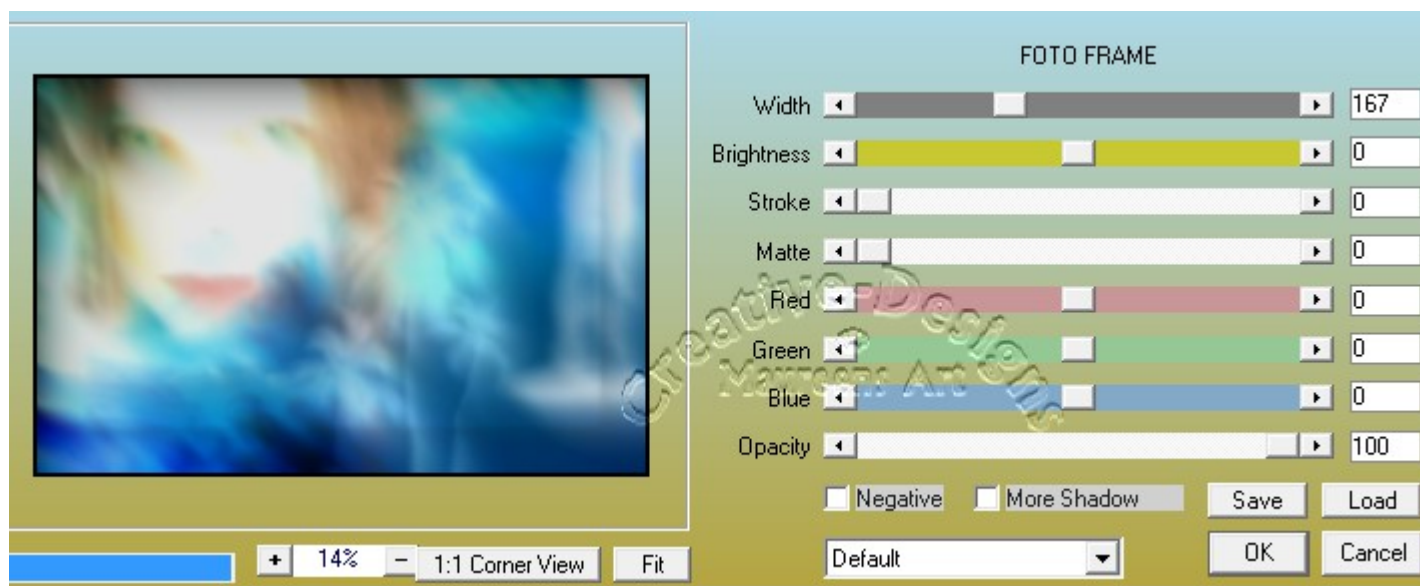
From the Organiser, click, hold and move the seashells png onto the basic (water) layer. Move the shells layer to sit just above the basic (water) layer. To adjust them into place, use the Pick tool. Go to Blend Mode and apply Burn.

Your La Mer Collage is now complete. All you need to do is right click any layer, Merge, Merge All.



Don't forget to sign your work.

You can add a nice photo frame. There is a Plugin called Foto Frame. If you do not have it, it's in the zip file. I used it on my finished image.



The result of my image is below.



These collage images can look quite stunning printed on a large canvas.

I hope you enjoyed learning a little more about Collage. There will be further tutorials coming soon for both PaintShop Pro and Corel Painter.