

# PaintShop Pro Tutorials

By Maureen Eves-Lavis

## TITLE: SKETCH FROM A PHOTOGRAPH

**Software: PaintShop Pro X6**

**Web Page: [Creative-Designs](#)**

**Materials Required: Photograph**

**Authentec Perfectly Clear Filter – PSPX6 Ultimate**



### DESCRIPTION

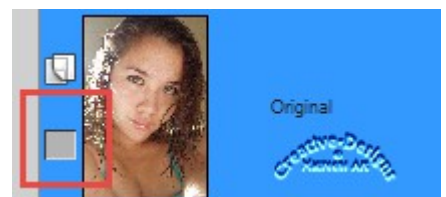
From a photograph create a very simple sketched image

---

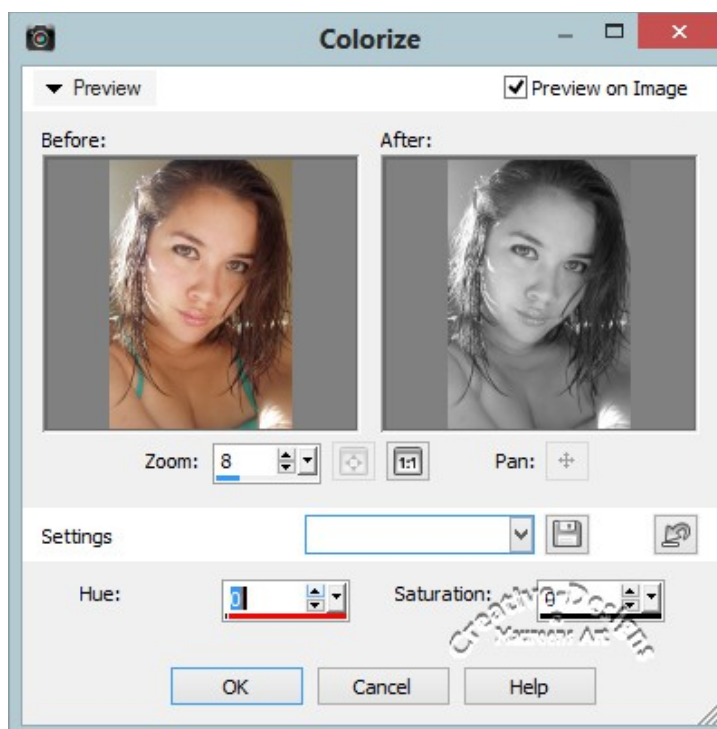
### REMEMBER TO SAVE YOUR WORK OFTEN

Authentec Perfectly Clear Plugin is available if you have PSPX6 Ultimate. Once you register PSPX6 Ultimate you will receive the plugin for installation. The plugin works in both 32 and 64bit versions.

1. Open a photograph in the workspace. Free photographs can be downloaded from the [Morgue File](#).
2. Right click on the image in the Layers Palette and Promote Background to Layer - rename layer Original.
3. Right click the image in the Layers Palette and Duplicate it. Rename layer Sketch.
4. Click the Visibility Toggle to hide the Original Layer.

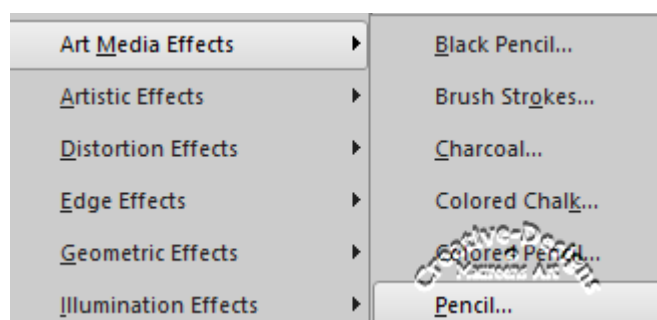
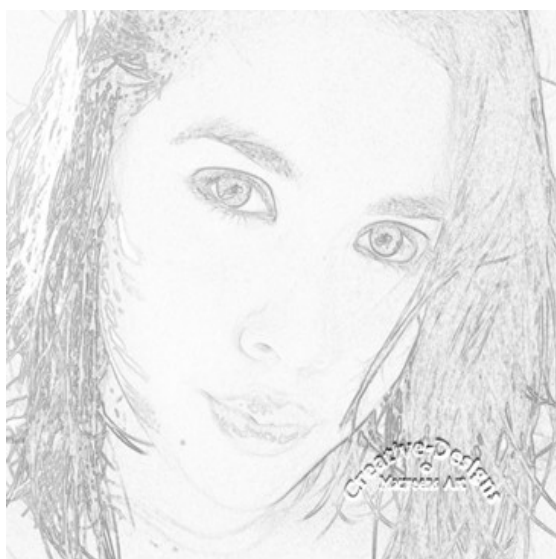


5. On the duplicated image, hold the Shift key and L to open Colourise and move sliders to 0 to desaturate the image colour.



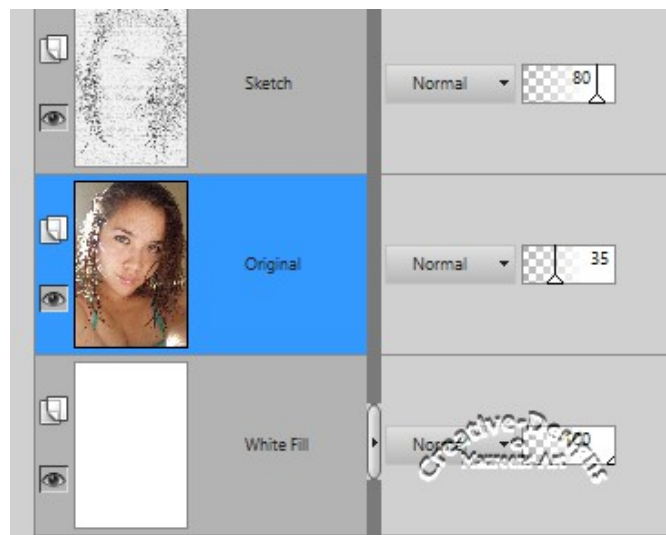
6. Go to Effects, Art Media and select the Pencil and accept the default settings. Click Ok.

Your image should look similar to this:

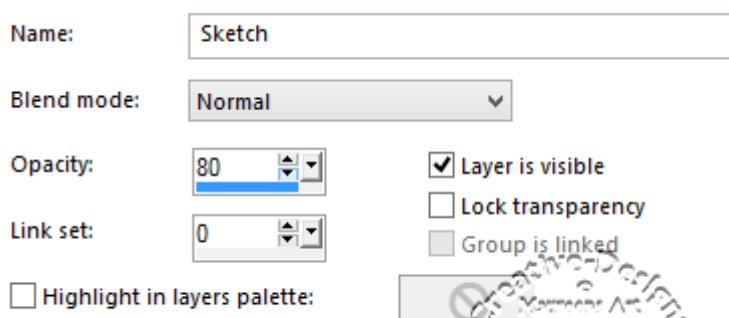


7. Add a new Raster Layer and Flood Fill with white - White Fill. Move this layer below the Original layer.

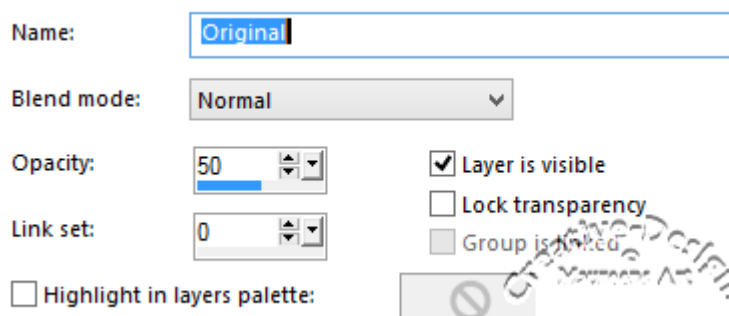
Look at my Layers Palette. Yours should be the same.



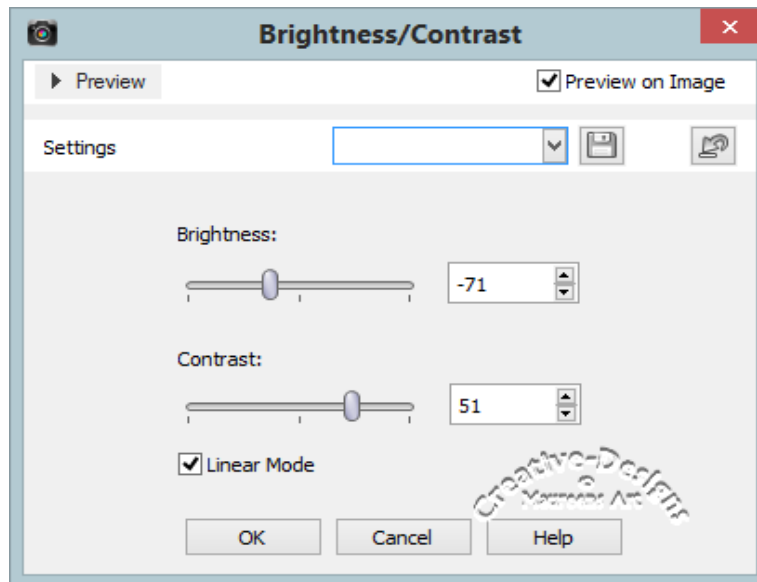
8. Decrease Opacity to 80 on the sketch layer.



9. Decrease the Opacity to 35 on the Original layer.



10. Select the Sketch Layer, go to Adjust, Sharpness, Sharpen and do this twice.
11. Still on the Sketch Layer, go to Adjust, Brightness and Contrast, Brightness/Contrast:



After Brightness/Contrast

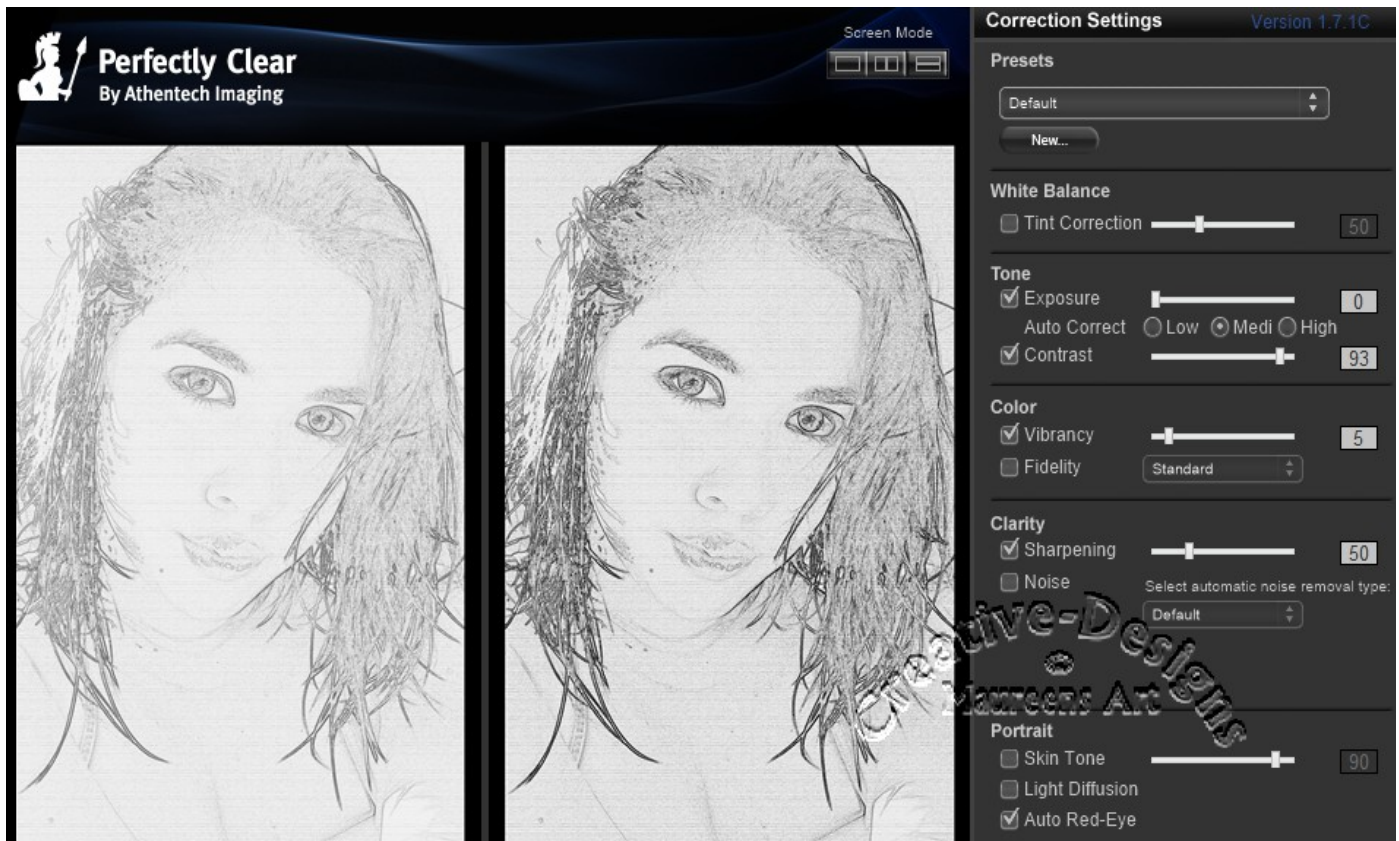


If you do not have this version omit 12.

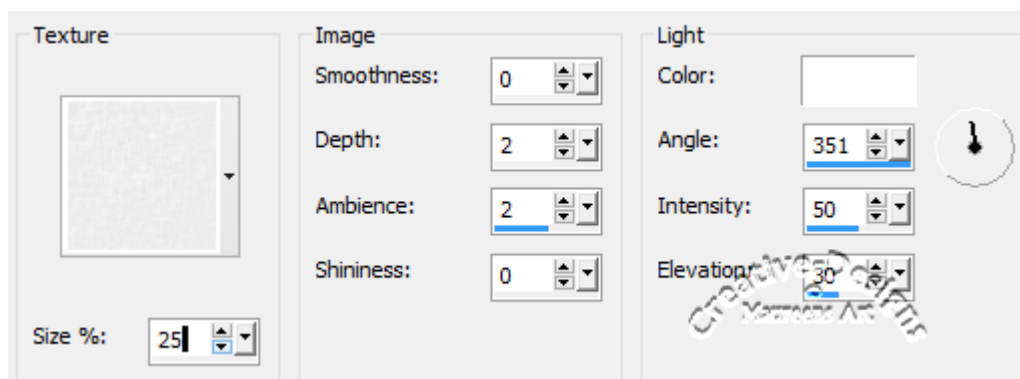
12. Go to Effects, Plugins and open Authentec Perfectly Clear. Click on the Screen Mode so you can see the images of before and after side by side.

The settings are Default. If your settings are the same, click OK to accept.

The sketch has a little more depth now.

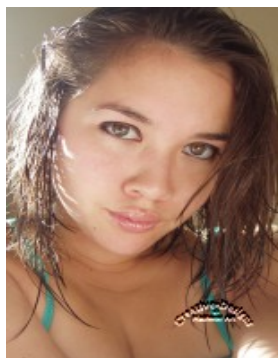


13. You can apply a light texture to the sketch if you wish. I used a very soft paper texture at 25%. To do this go to Effects, Texture Effects, Texture. Click on the Texture thumbnail to open the Category. Find something that is soft, like a light paper style texture. Keep the size to around 25 to 30%



14. Your sketch is now complete except for merging all layers. Right click on any layer, Merge, Merge Flatten. Don't forget to add your signature to your work.

From a coloured photograph to a sketch:



Another example of Photograph to Sketch



To learn more about PaintShop Pro, join the free Beginner's Workshop for PaintShop Pro [HERE](#).

Also, you are welcome to join the PIRC Forums where there is a great community of graphic artists all learning together [HERE](#).