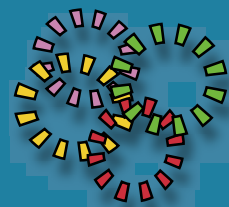


# CREATIVE-DESIGNS

## Tutorials



**Title:** [Plugin/Filter Installation](#)

**Software:** [PaintShop Pro X8](#)

**Author:** [Maureen Eves-Lavis](#)

**Website:** [Creative-Designs](#)



If you do not have PaintShop Pro you can download a trial or purchase a full version from Corel [HERE:](#)

---

PaintShop Pro X8 has two versions, 32bit and 64bit. 32bit Plugins/Filters will not function in the 64bit. It is best to install both 32 and 64bit as per recommendation from Corel. Some older 32bit plugins/filters will not work in PaintShop Pro 32bit either, but often there is a work-around that **MAY** work. Only later 64bit plugins/filters will work in PaintShop Pro 64bit.

My work-around for some older plugins to work is by installing a couple of dll files. Again, this is no guarantee they will work. Another way is to install Filters Unlimited and add plugins to that. Again, not all filters will work in Filters Unlimited either.

For this tutorial, go to [Google Nik Collection](#) web site to download the plugins; they're free! You may want to keep this web address as there is a lot of information on how to use Nik Collection plugins.

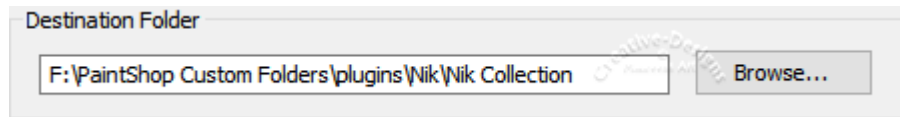
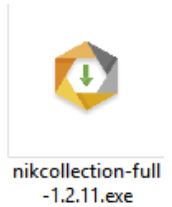
Before you install, a little reminder not to install/add plugins to PaintShop Pro / 18 / in your system folders. When you install PaintShop Pro a set of folders are created in Documents / Paintshop Pro / 18 / ..... one of them is Plug-Ins. You may already have a plugins folder that contains plugins for your 32bit PSP, any 64bit can also be installed here.

Note: For safety, I have the PSP custom folders on a different hard drive, you may want to consider this too!

Ok, so you have the nikcollection-full-1.2.11.exe file in your downloads folder.

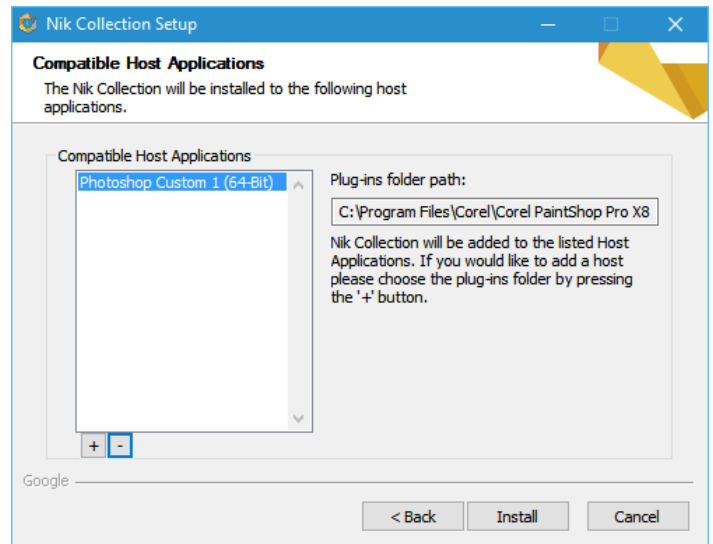
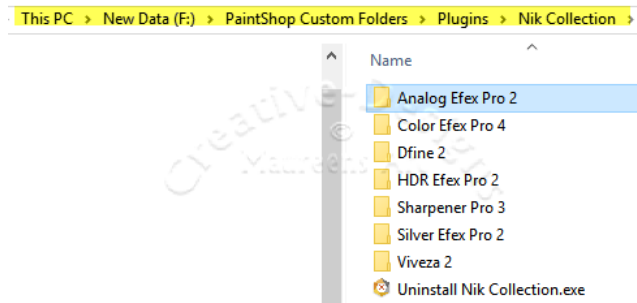
Double click on the .exe and follow the prompts.

1. Select your language.
2. Click Next to continue.
3. Read Licence Agreement. (You may want to un-tick the box). Click I Agree. You will need to choose a Destination Folder. Remember I said about placing this plugin to your custom plugin folder. Click Brows to locate it then click Next>



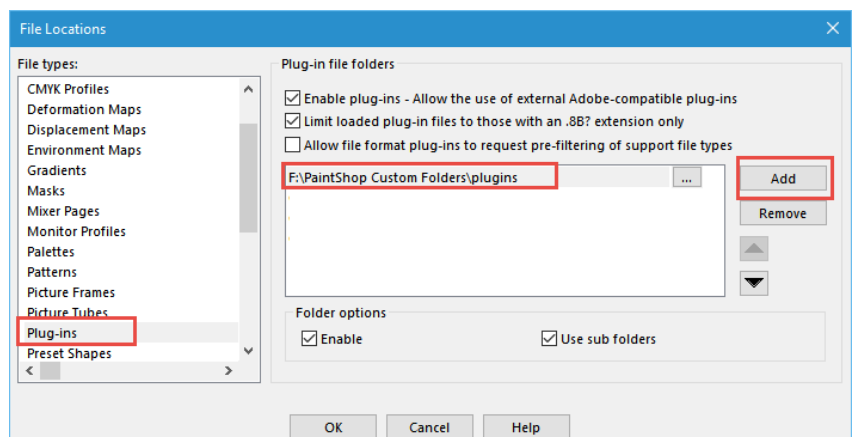
You will notice that mine is on a separate hard drive.

4. Compatible Host Application: Click the + sign and locate PaintShop Pro on the C drive - Program Files / Corel / Corel PaintShop Pro X8 (64-bit) and click OK. Now click to Install.
5. Then wait until it installs and click Next>
6. Click the Finish button.

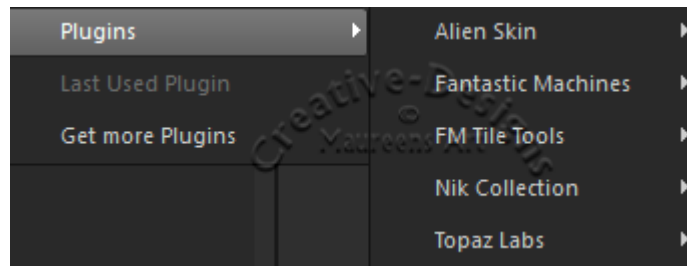


The files are not only within your custom plugins folder, but also in PaintShop Pro 64-bit plugins folder. There is no uninstall file in this folder it is in the custom folder. If you need to uninstall, use that file only. The plugins are now installed.

Open PaintShop Pro X8 64bit. If you haven't done so already, click on File, Preferences, File Locations. Highlight Plug-ins in the left column, go to Add and select your PaintShop Pro custom folders/plugins.



Open PaintShop Pro X8 (64-bit) and a photograph. Go to Effects, Plugins and there you should see Nik Collection.



Now, it's up to you to learn how to use them. Go back to the Google page where there is information on how to use each filter. Enjoy!